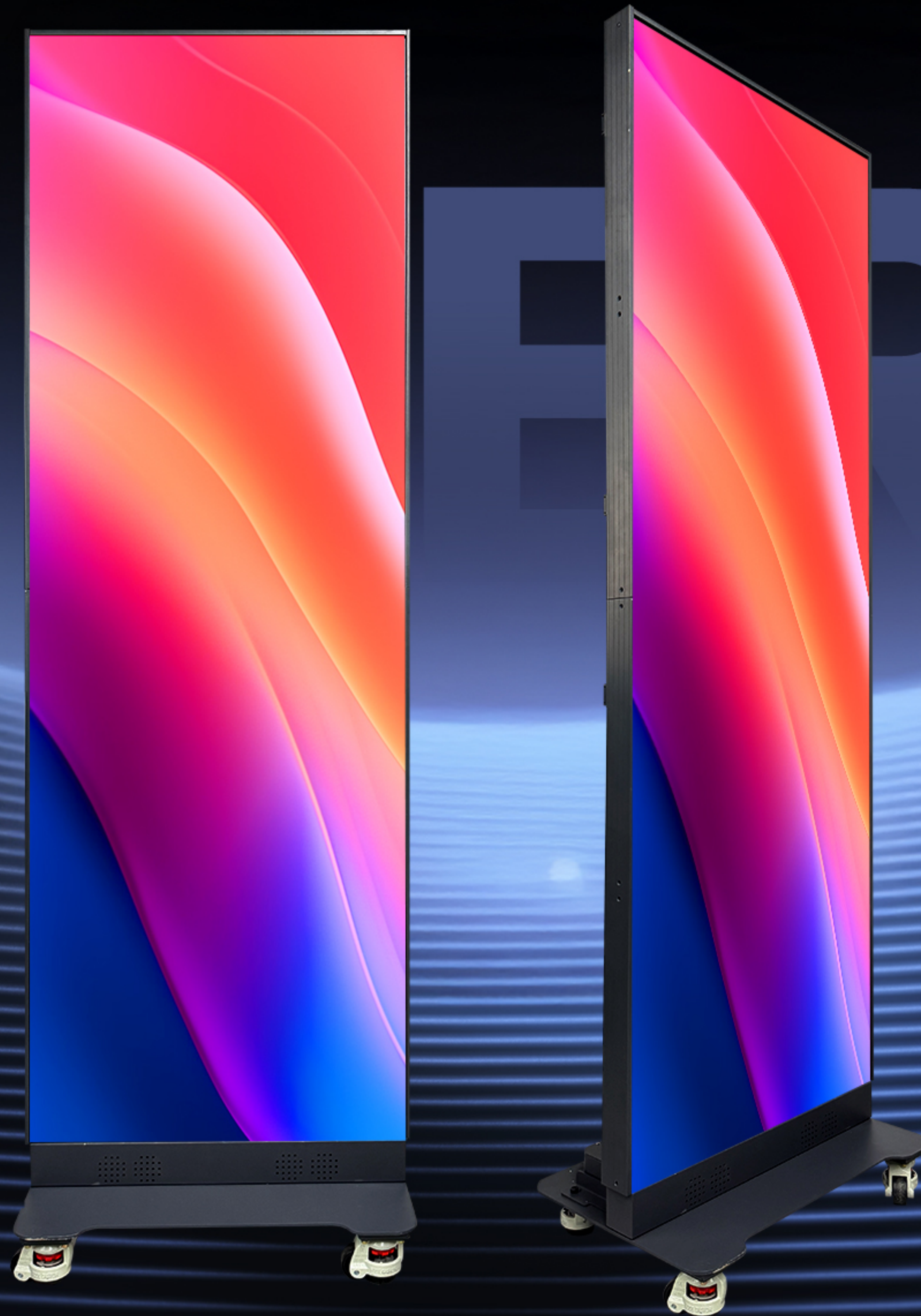
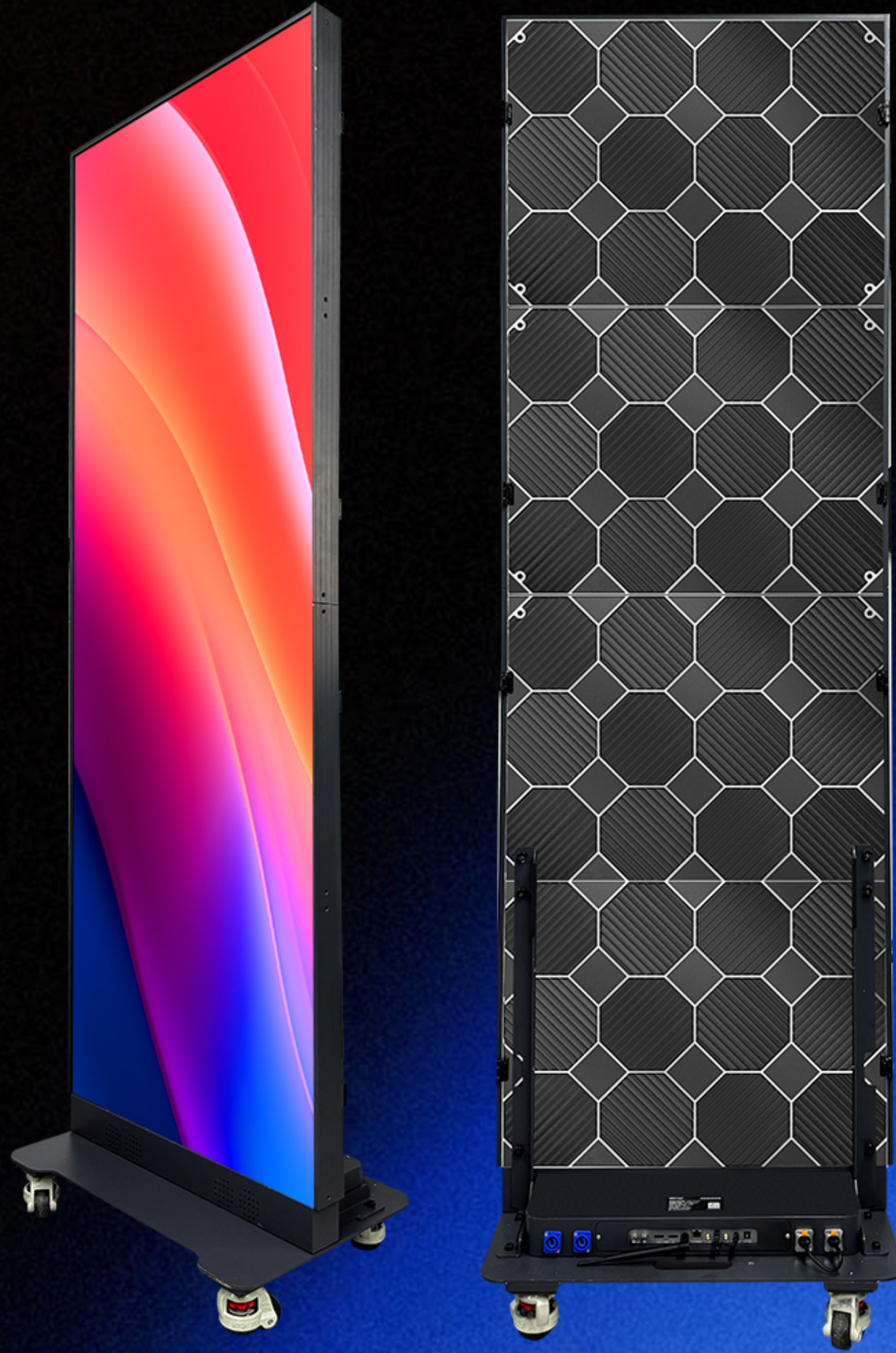


# FOLDABLE POSTER LED DISPLAY

PIF SERIES





## PIF SERIES

Pixel Pitch: P1.25 P1.53 P1.86 P2 P2.5

Display Size: 640\*1920mm

Cabinet Size: 640\*480mm

Module Size: 320\*160mm

Brightness: 600-800cd/m<sup>2</sup>

Refresh Rate: 3840Hz



Easy to Move



5000:1 High Contrast Ratio



Plug and Play



Front Maintenance

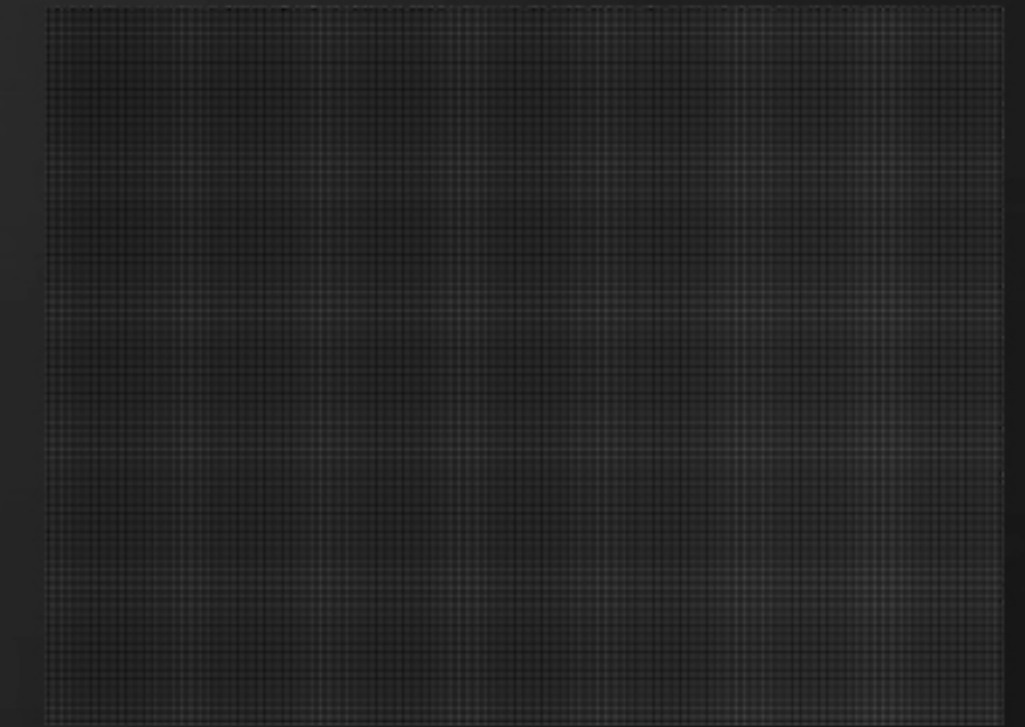
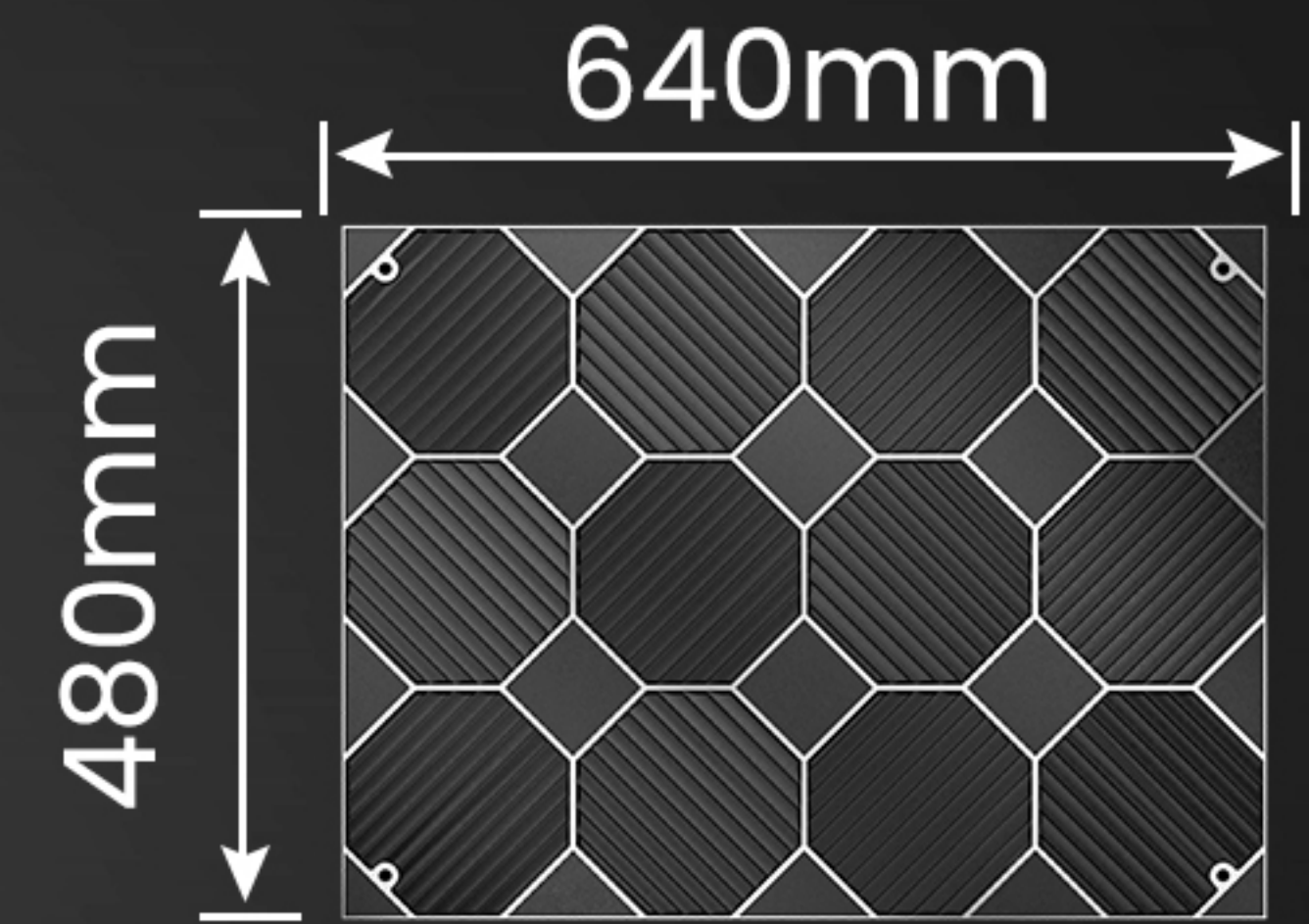
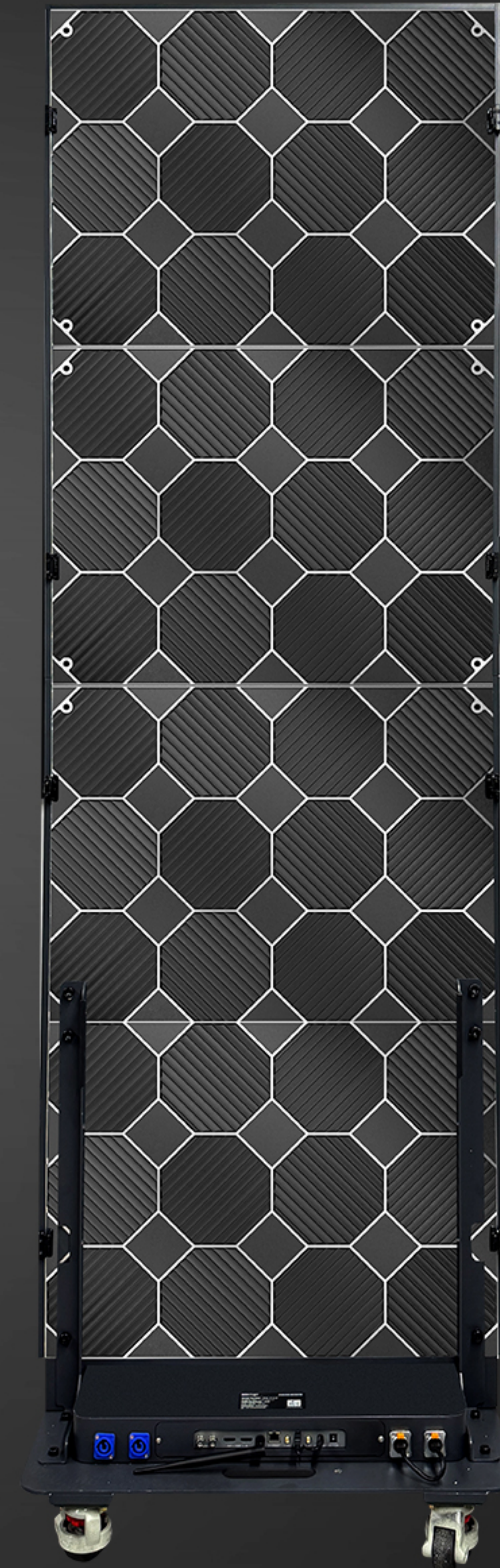


Wide Viewing Angle



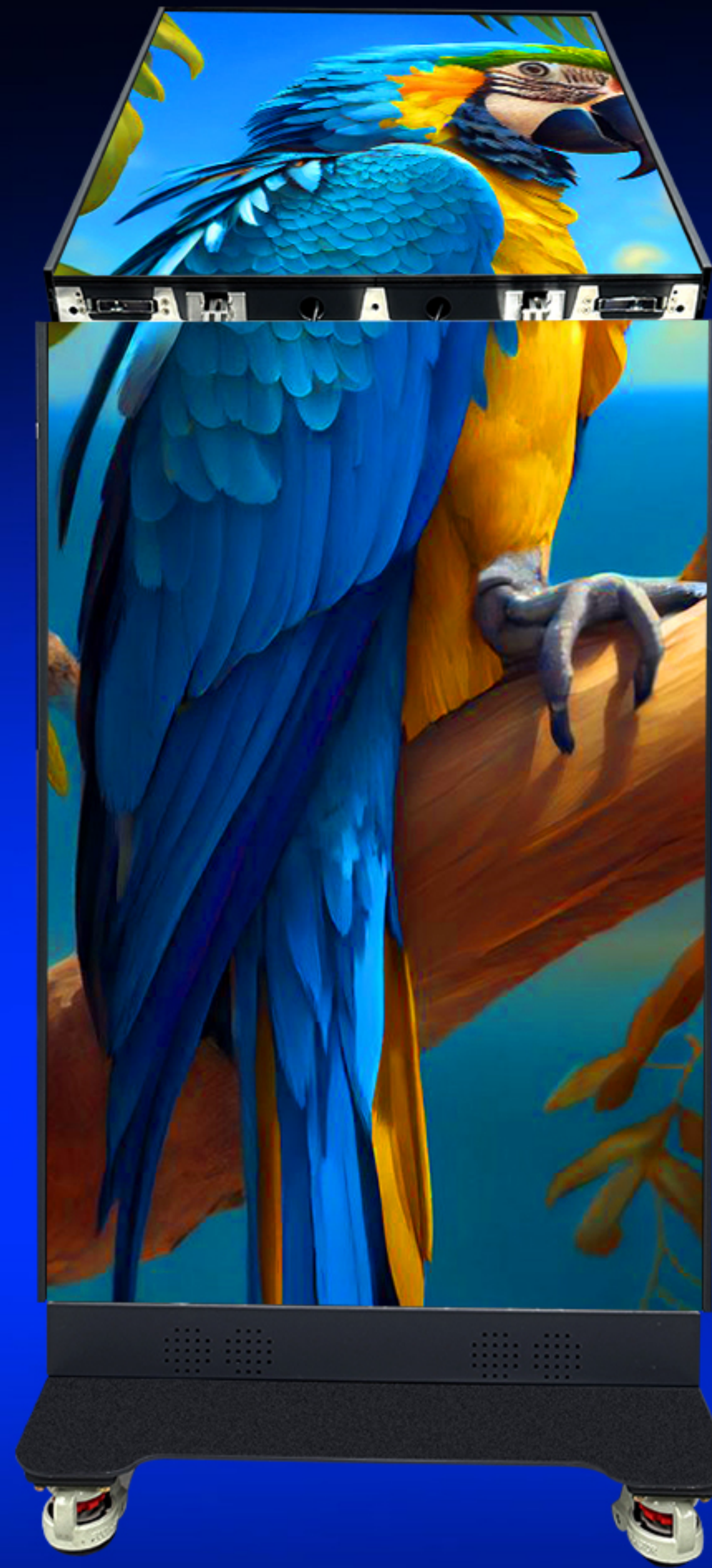
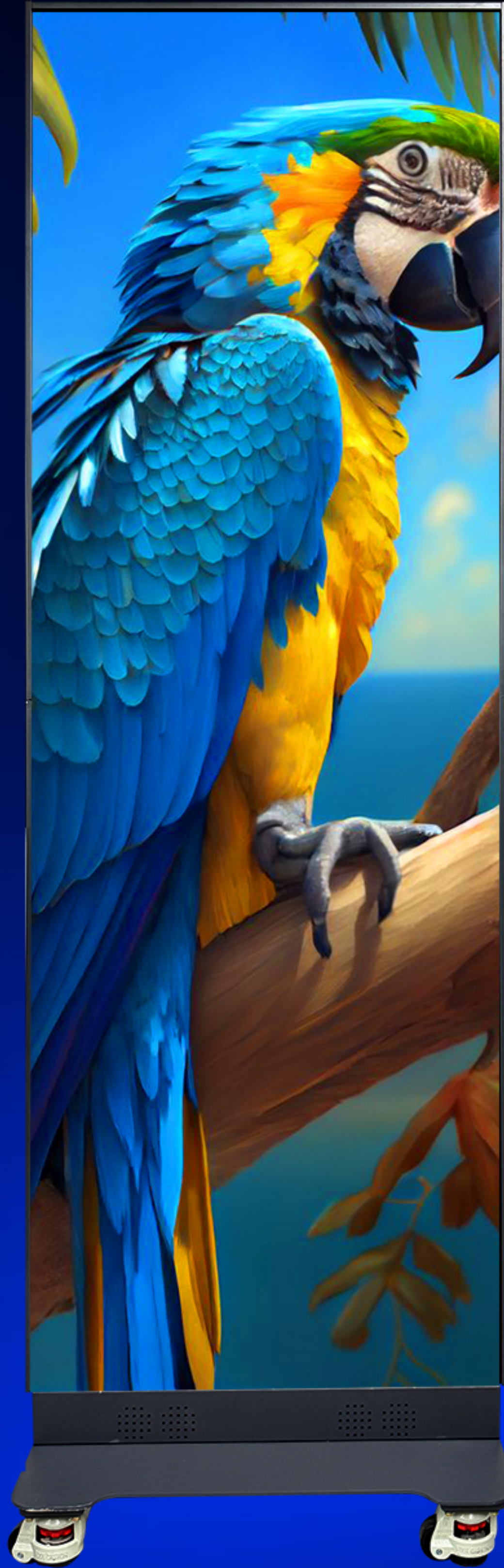
Energy Conservation

# DIMENSIONS



# Foldable Design

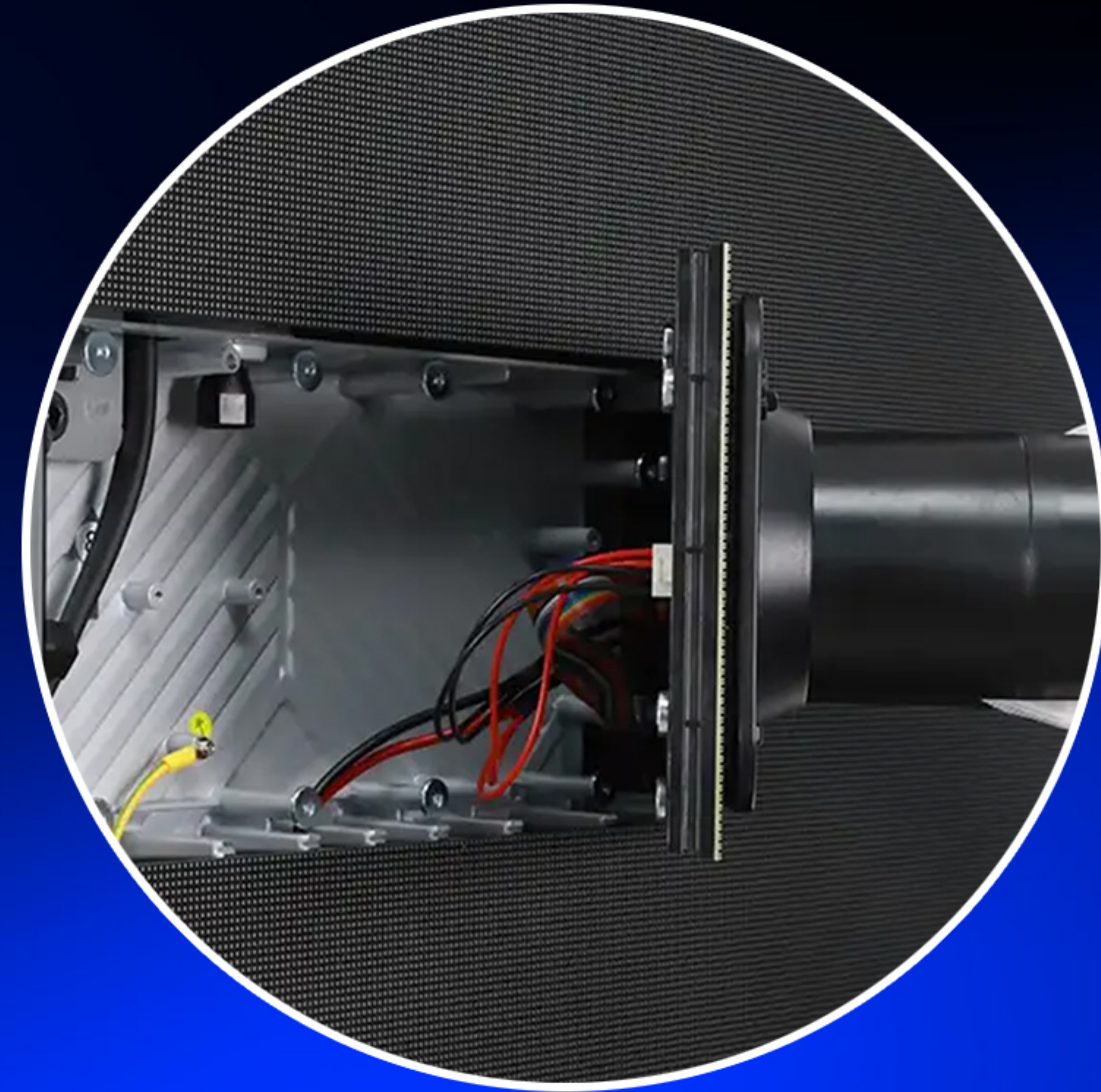
Foldable backwards, magnetic edging for convenient and quick installation



Strong magnet

# Front Maintenance Design

Adopting magnetic module design, easy and fast installation



# Base With Wheels

The base uses high-end t, which are more mobile and stable and safer to use.



Fuma wheels



# Seamless Splicing Screen Display

Supports either individual and combination display as video wall



1



1

2

3

4

5

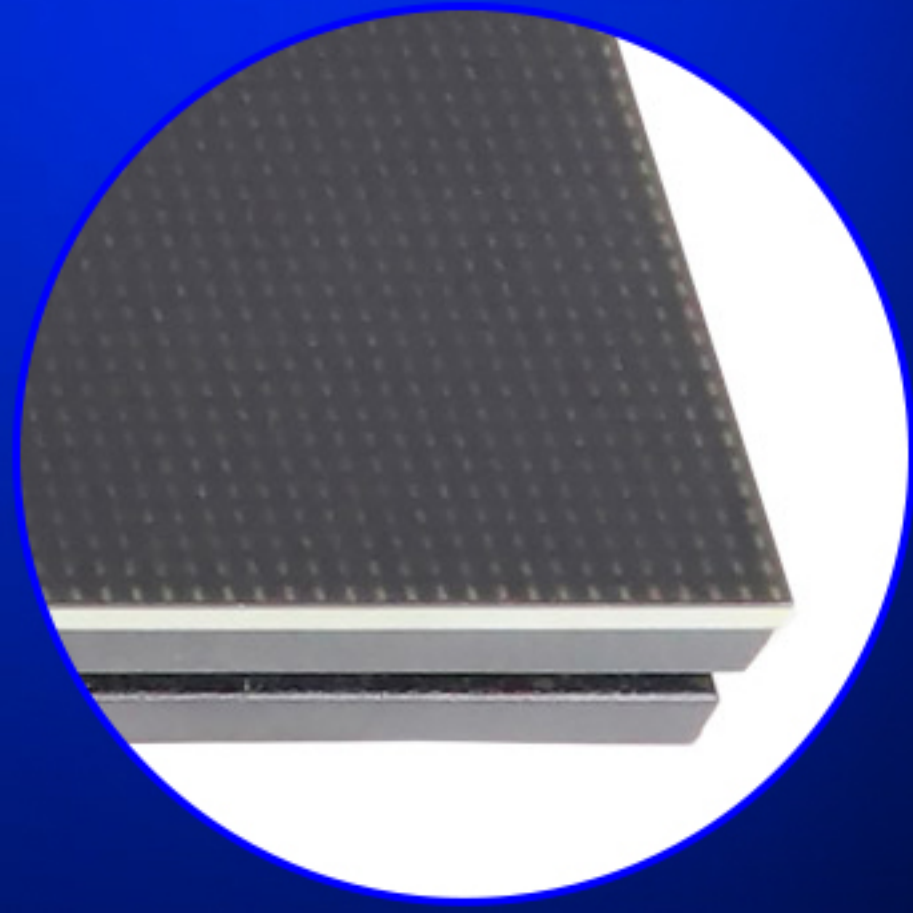
6

7

8

(Up to 8 LED screens can be spliced)

# MULTIPLE MODULE PROCESSES ARE AVAILABLE FOR SELECTION



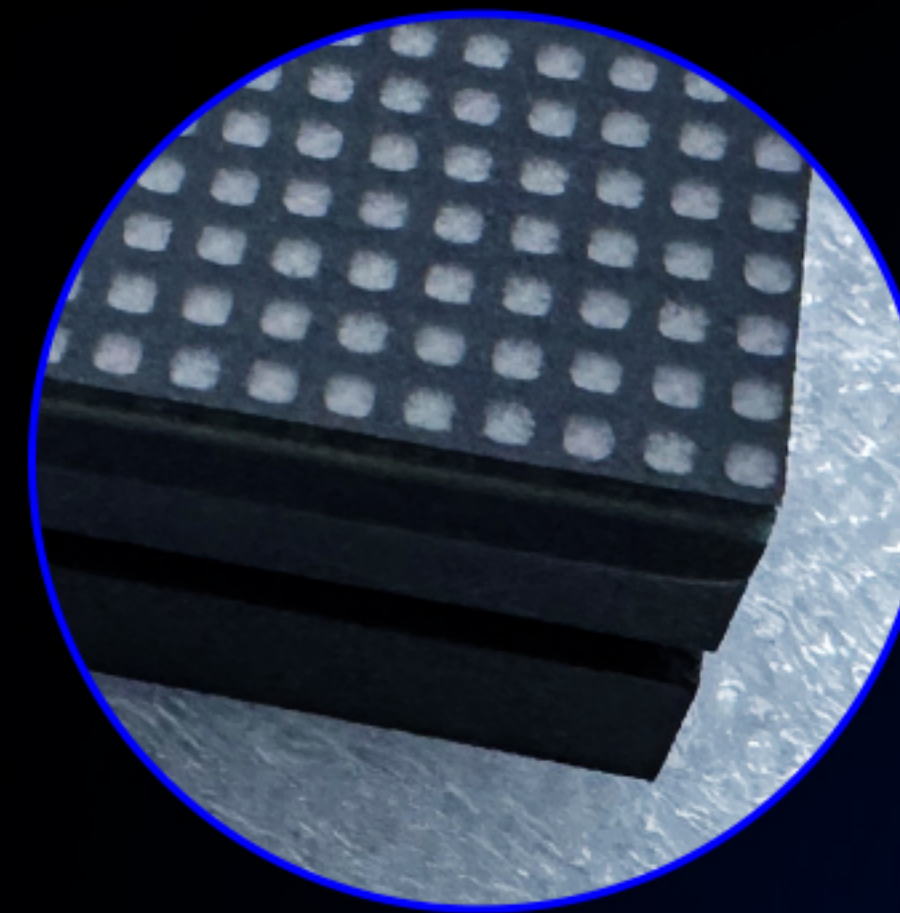
## COB LED module

### Advantages:

**High reliability:** No gold wire bonding; strong resistance to static electricity and physical impact.

**High protection level:** Dustproof, waterproof, impact-resistant, and oxidation-resistant; ideal for humid and dusty environments.

**Uniform display:** Integrated surface ensures wide viewing angles and excellent color consistency.



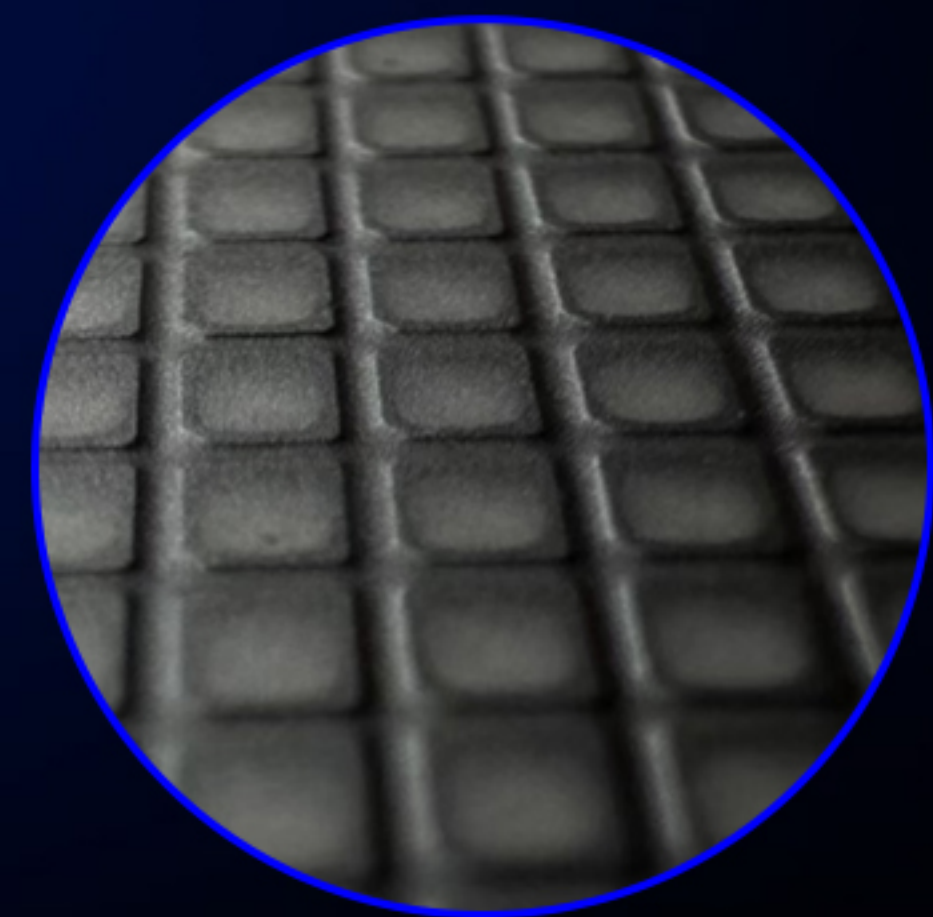
## GOB LED module

### Advantages:

**Excellent protection:** Dustproof, waterproof, impact-resistant, and moisture-proof; suitable for harsh environments like outdoors and public spaces.

**Scratch and pressure resistance:** Glue layer protects LEDs from damage.

**Easy maintenance:** Damaged LEDs can be replaced individually without changing the entire board.



## HOB LED module

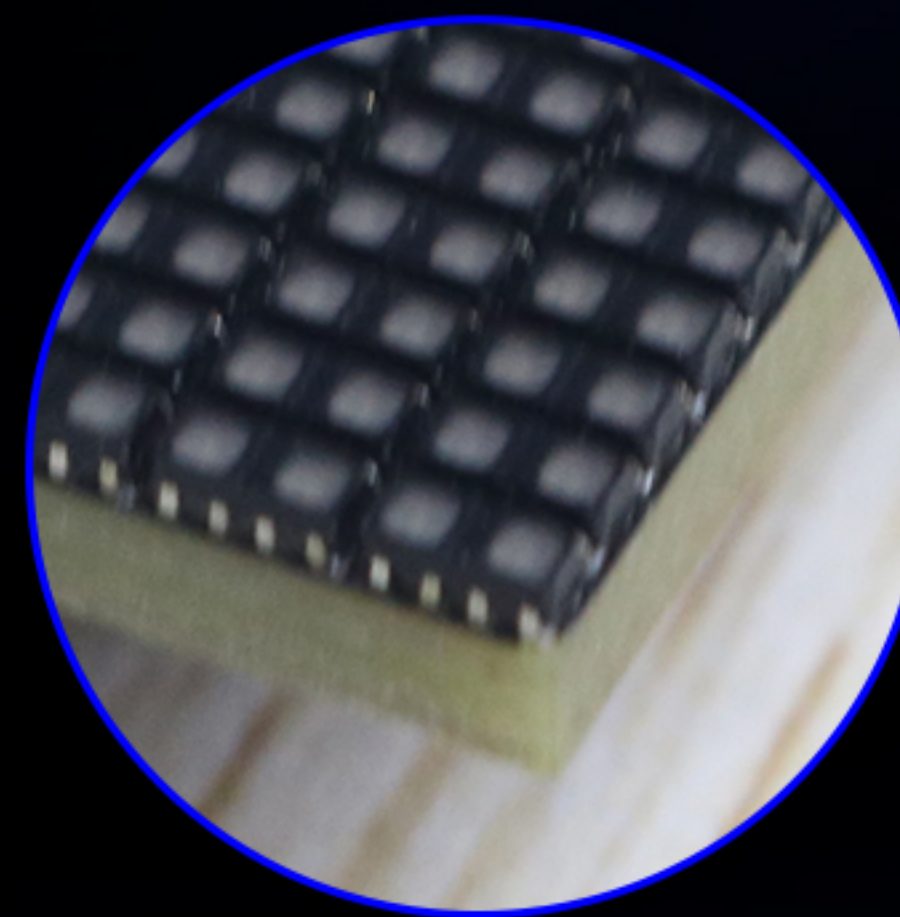
### Advantages:

**Superior Protection:** Offers waterproofing, dustproofing, impact resistance, anti-static, and moisture resistance.

**Higher Brightness & Contrast:** The transparent layer has excellent optical clarity, with true-to-life colors and deep blacks.

**Low Failure Rate:** LEDs are well-protected from falling off or damage.

**Easy to Clean & Maintain:** Smooth, seamless surface is easy to wipe and resistant to dust buildup.



## SMD LED module

### Advantages:

**Mature and stable technology:** High production efficiency.

**Cost-effective:** Suitable for large-scale manufacturing.

**Good color uniformity:** Integrated RGB chip design provides even light output.

**Versatile applications:** Suitable for indoor/outdoor fixed installations, rental, and creative displays.

# Smart Cloud Management

LED screen content can be updated via iPad, mobile phone, PC or laptop.  
Play in real time and publish across platforms. Supports USB or WIFI, supports  
IOS or Android device operation.



USB



RJ45



Computer



Cloud



HDMI Sync



Viplex Handy APP



- Basic Control Methods**
- 1, PC control(RJ45 Cable)
  - 2, PC control(wiFi)
  - 3, Mobile phone(wiFi)
  - 4, USB flash

- Multiple Control Via CMS Server**
- 1, LAN
  - 2, WiFi
  - 3,4G

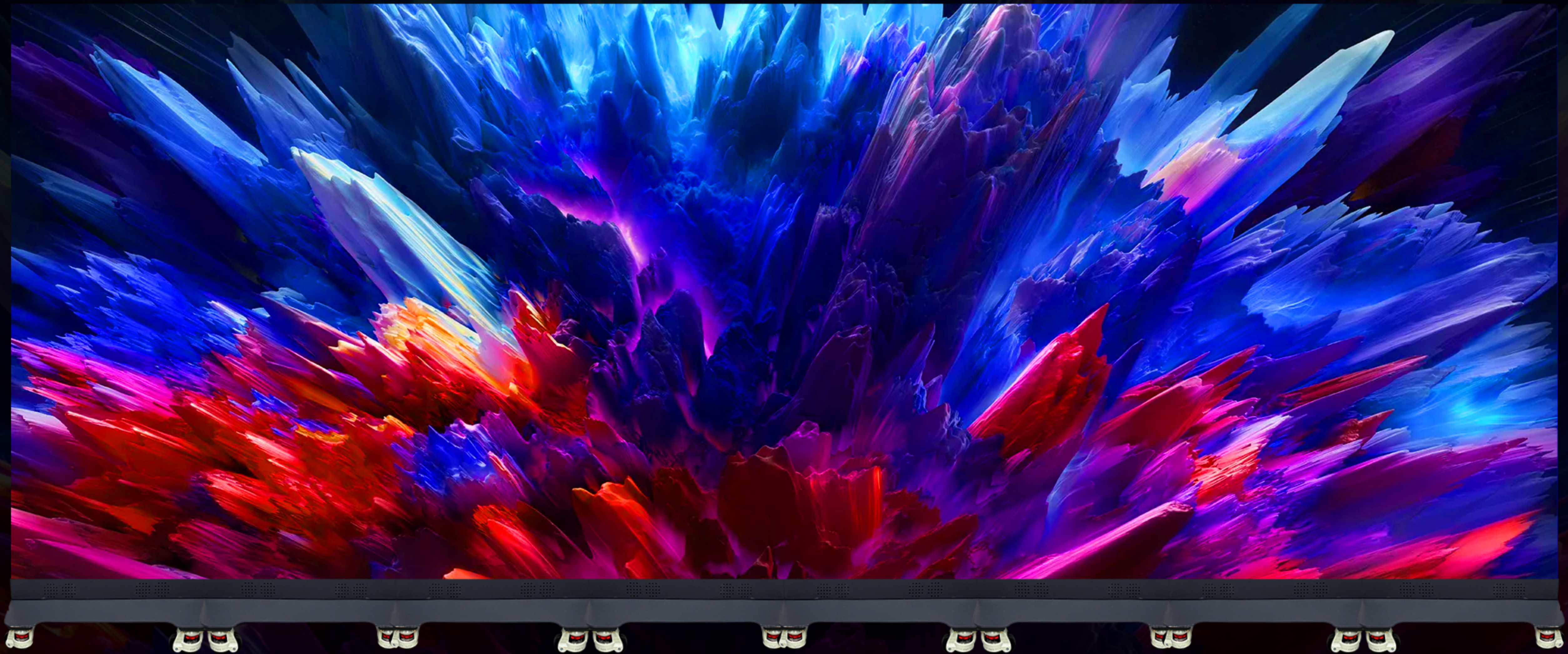
# 3840Hz Refresh Rate

Wide color gamut, uniform color, no rainbow effect, delicate and soft picture



## WIDE VIEWING ANGLE

140° wide viewing. Deliver an excellent viewing experience without the loss of true colour definition.



140°

# 5000:1 HIGH CONTRAST

High contrast ratio expands the color dynamic range, making the picture more vivid and lifelike



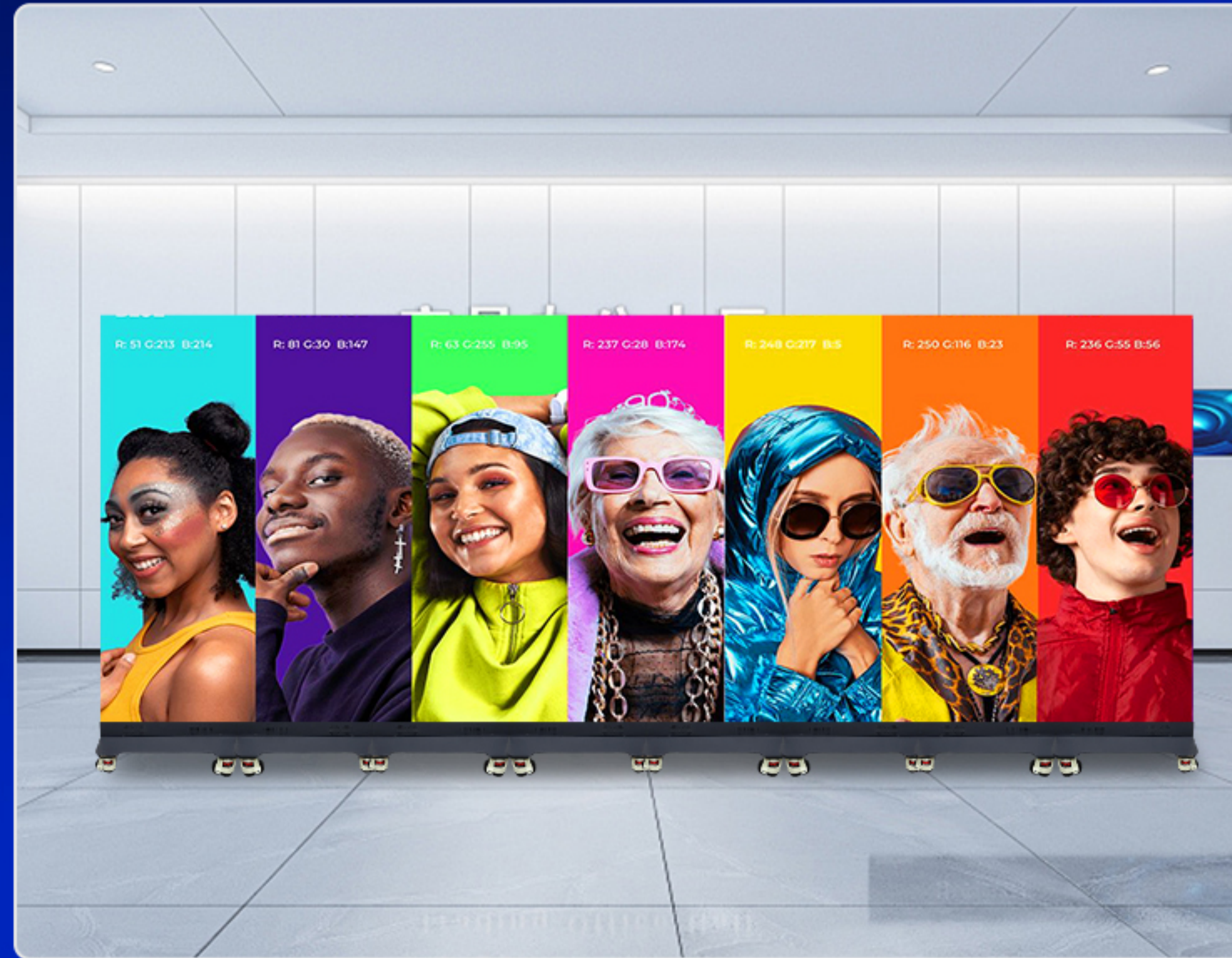
High contrast

Low contrast

# SPECIFICATIONS

Pixel pitch(mm)	P1.25	P1.53	P1.86	P2	P2.5
LED package	COB/GOB/HOB/SMD	COB/GOB/HOB/SMD	COB/GOB/HOB/SMD	GOB/HOB/SMD	GOB/HOB/SMD
Module resolution (W×H)	256×128pixels	208×104pixels	172×86pixels	160×80pixels	128×64pixels
Module dimension (W×H)			320mm×160mm		
Display dimension (W×H)			640×1920mm		
Module arrangement (W×H)			2×12		
Cabinet flatness			≤0.1mm		
Cabinet dimensions(W×H)			640mm×480mm		
Weight			≤57.5kg		
Serviceability			Front-access		
Physical density	640,000dots/m <sup>2</sup>	422,500dots/m <sup>2</sup>	289,050dots/m <sup>2</sup>	250000dots/m <sup>2</sup>	160,000dots/m <sup>2</sup>
Brightness			600-800cd/m <sup>2</sup> (adjustable)		
Viewing angle (H/V)			140°/140°		
Screen flatness			≥98%		
Chromaticity uniformity			±0.003		
Contrast ratio(max)			5,000:1		
IP rating			IP43		
Color depth			14-16bit		
Driving mode			1/43S		
Refresh rate			≥3,840Hz		
Color temperature			2,000K-9,500K(adjustable)		
Input voltage			AC: 110V-240V, 50-60Hz		
Max. power consumption			≤600W/m <sup>2</sup>		
Ave. power consumption			160W/m <sup>2</sup> - 265W/m <sup>2</sup>		
MTBF			≥10,000hrs		
Operating environment - Temperature			-10℃ - +60℃		
Operating environment - Humidity			30% -75%RH (no condensation)		

# APPLICATION



## PACKAGING



**1in1:92kg**



**1in2:150kg**

# CERTIFICATE

**IEC**  
CB TEST CERTIFICATE

Verification of Conformance  
No. C9054202001-50

Applicant: Shenzhen DDW Technology Co., Ltd.  
502, Building 5, Zhengzhong Industrial Park, X. Bao'an District, Shenzhen, 518103

Manufacturer: Shenzhen DDW Technology Co., Ltd.  
502, Building 5, Zhengzhong Industrial Park, X. Bao'an District, Shenzhen, 518103

Product: Video Wall

Model No.: DDW-LW4901, DDW-LW4902, DDW-LW4903, DDW-LW4904, DDW-LW5503, DDW-LW5504, DDW-LW5505, DDW-LW5502, DDW-LW5503

Test acc to: IEC 60950-1:2005+A1:2009+A2:2013, IEC 60950-1:2014+A1:2017, IEC 60950-2:4:2013

The product described above has been consolidated by us and found in compliance with the applicable requirements of 16.2.1 to 16.2.8 of the EMC Directive. It is possible to use PSE marking with this line.

The certificate applies to the tested sample above mentioned only and to the whole production. It is only valid in connection with the products mentioned only. The verification is based on the test report No. R955521.

**PSE**

**TÜV Rheinland**

**BCTC**

## TEST REPORT

Report No.: BCTC2207738761SN1

Applicant: SHENZHEN DDW TECHNOLOGY CO., LTD.

Product Name: LED VIDEO WALL

Product Type: DDW-LW550DUNTMA4

Tested Date: 2024-01-22 to 2025-02-24

Issued Date: 2025-02-24

Shenzhen BCTC Testing Co., Ltd.

**BCTC APPROVED**

No.: BCTC2025-54-012

Page 1 of 63

**QMS CERTIFICATE OF REGISTRATION**

Registration No.: 12824Q21369R0S

This is to certify that the Quality Management System of  
**SHENZHEN DDW TECHNOLOGY CO.,LTD**  
Unified social credit code:91440300055133476P  
201, Building 8, Yilisheng Industrial Park, No. 602 Fengtang Avenue, Tangwei Community, Fuhai Street, Bao'an District, Shenzhen City, Guangdong Province

Has been audited to conform to the following Quality Management System Standard:  
**GB/T19001-2016/ISO9001:2015**

For the whole process of  
**Production of electronic products (LED DISPLAY, LCD VIDEO WALL, DIGITAL SIGNAGE) (export only)**

DATE OF ISSUE: 10-10-2024 DATE OF SUPERVISION: 10-10-2024 VALID UNTIL: 10-09-2027

Certified organizations within the validity period of the certificate surveillance audit at least once a year

This certificate is valid until 09-27-2025

The certificate information is available in the certification and accreditation administration of the P.R.C.'s official website: [www.cnca.gov.cn](http://www.cnca.gov.cn)

**IAF** **CNAS** **CSI**

中国认可 国际互认 管理体系 认证机构  
MANAGEMENT SYSTEM CERTIFICATION BODY  
CNAS C128-M

No.21, No.4 Yard, Yuetanbeilaoguo Street, Xicheng District, Beijing, 010-68017408

*Zhou Zhongde*

**BKC**

## Certificate of Compliance

Certificate No.: BKC-160001297

Applicant: **Shenzhen DOW Technology Co., Ltd**  
3/F, No. 5, Intelligent Creation Park, Yabian, Shajing Street, Bao'an District, Shenzhen, China 518104

Manufacturer: **Shenzhen DOW Technology Co., Ltd**  
3/F, No. 5, Intelligent Creation Park, Yabian, Shajing Street, Bao'an District, Shenzhen, China 518104

Product: **LED full color display**

Model No.: P4, P4.8, P5, P5.2, P5.625, P5.68, P5.687, P5.857, P5.923, P2, P2.3, P2.391, P4, P4.8, P4.87, P4.94, P4.98, P4.983, P10, P10.4, P10.416, P13.33, P15.625, P16, P16.64, P20, P25, P31.25, P33.33.

Test Standard: IEC62321-1:2013

The EUT described above has been consolidated by us and found in compliance with the Council RoHS Directive 2002/95/EC. It is possible to use CE marking to demonstrate the compliance with this RoHS Directive. It is only valid in connection with the test report number: BKC-160001297.

**RoHS**

Shenzhen BKC Testing Co., Ltd.  
6/F, Building 3, Zhongliang Industrial Park, Nanwan Street, Longgang District, Shenzhen, Guangdong, China. Tel:400-059-0700 0755-33170405  
E-mail: bkc@bkc-lab.com. Certificate Search: <http://www.bkc-lab.com>

**TUV**

## of Conformity

Shenzhen BCTC Testing Co., Ltd.

**TUV**

# 5 YEARS WARRANTY

Common warranty in LED field is 2 years, ours is 5  
Longer warranty periods, better after-sale services  
worry-free user experience



OEM&ODM

**1000+**  
Projects

**5** days  
Fast delivery



Door to door

**3D**

Installation video



Sample support



# CONTACT US

## SHENZHEN DDW TECHNOLOGY CO.,LTD



86 755 23229716



86 134 17558100



[www.ddw.net](http://www.ddw.net)



[info@ddw.net](mailto:info@ddw.net)



2F Building 8, YiLisheng Industry Park, Fuyong  
Baoan District, Shenzhen,518103