

# ENERGY SAVING OUTDOOR LED SCREEN

P2.976/P3.91/P4.81/P6.25/P7.81/P10.42 (1000x1000x83mm)



## CHARACTERS



Upto 3840Hz



Ultra-thin



22.5kg/pc



Die cast aluminum



Wide Viewing Angle



Low power consumption



High contrast

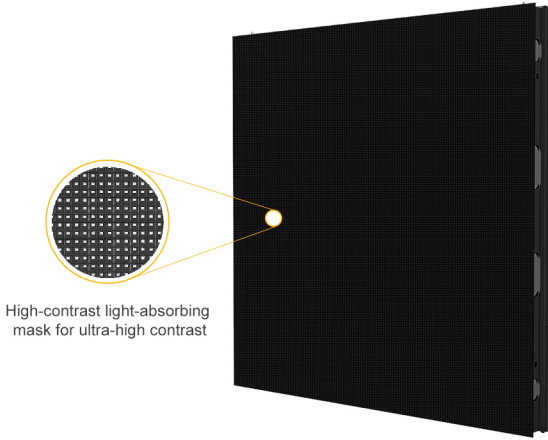


Front & Rear maintenance



# FC-SERIES

- ▶ All aluminum material, lighter, thinner and more worry-free
- ▶ High-end energy saving, eye protection and environmental protection
- ▶ IP65 waterproof rating, ultra-wide viewing angle viewing experience



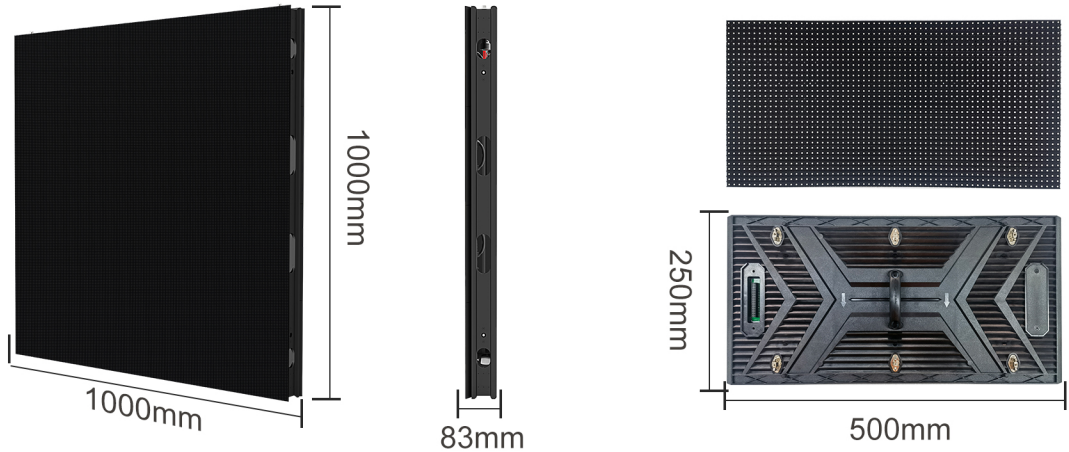
## DDW-LEDFC

# SPECIFICATIONS

Pixel Pitch	P2.976	P3.91	P4.81	P6.25	P7.81	P10.42
SMD Type	SMD1415	SMD1921	SMD1921	SMD2727	SMD2727	SMD2727
Physical Density(dots/m <sup>2</sup> )	112896	65536	43264	25600	16384	9216
Module Resolution	168x84	128x64	104x52	80x40	64x32	48x24
Panel Dimension(WxH/mm)	1000X1000X83(Customizable for1500 width and 500/750 height)					
Module Size (mm)	500x250					
Panel Resolution	336x336	256x256	208x208	160x160	128x128	96x96
Module quantity(WxH)	2x4					
Panel Weight(kg)	22.5					
Maintenance Mode	Front & Rear					
Cabinet material	Aluminum					
Brightness(Nits)	6000					
Color temperature(K)	5000-12000 Adjustable					
Viewing Angle(H/V)	140°/160°					
Best viewing distance	3-100m	4-100m	4-100m	6-150m	8-150m	10-200m
Contrast Ratio	10000 : 1					
Frequency(Hz)	50/60					
Drving Mode	1/21s	1/16s	1/13s	1/8s	1/4s	12s
Grey Level	16bit					
Refresh Rate (Hz)	3840					
Max power (W/m <sup>2</sup> )	650					
Avg power (W/m <sup>2</sup> )	100-200					
Grude	IP65					
Power supply requirements	AC90-264V,47-63Hz					
Working Temp/Humidity(°C/RH)	-20~60°C/10%~85%					
Storage Temp/Humidity(°C/RH)	-20~60°C/10%~85%					

# 1000X1000mm CABINET DESIGN

Unique panel design 1000\*1000mm cabinet size and 500\*250mm LED module, ultra-thin thickness, 83mm design

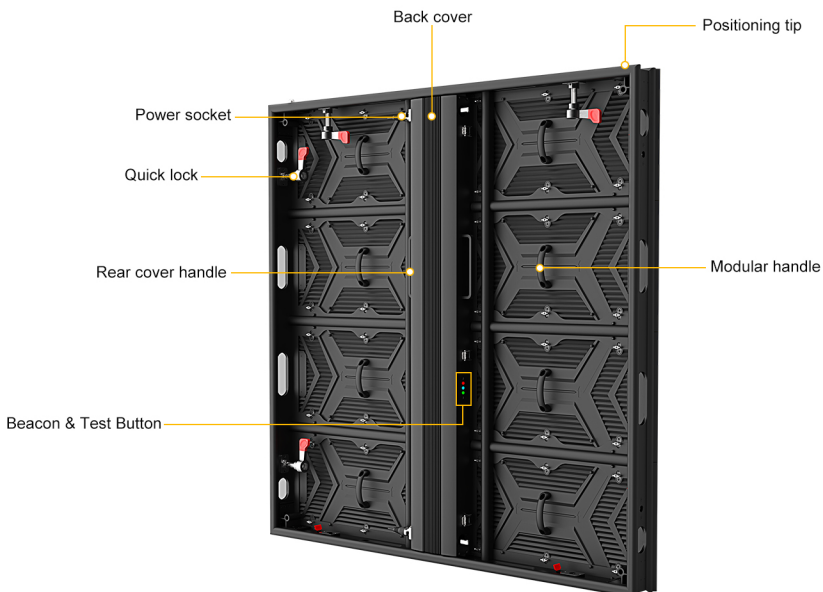


1000x1000x83mm

500x250mm

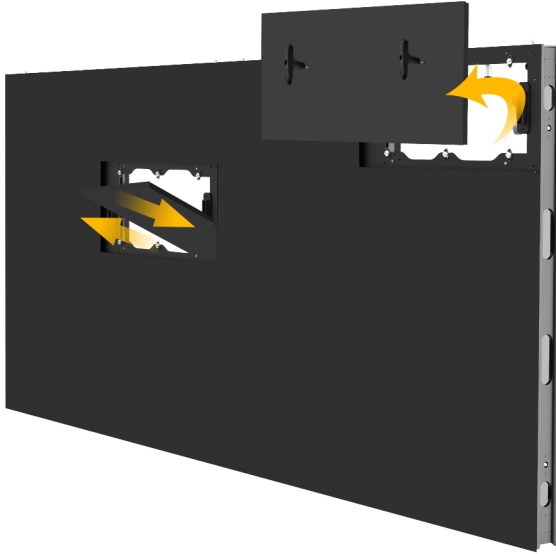
## PERFECT CABINET STRUCTURE

Unique Cabinet Design with elegant appearance and human layout, Perfect cabinet from hideable handle, fast locks, panel module, power & signal indicator and wire hole.



# FRONT AND REAR MAINTENANCE

Dual service mode of front and rear design to save you Maintenance Cost. The LED panel can be assemble and disassemble easily and quickly.



Hot-Swapping Technology

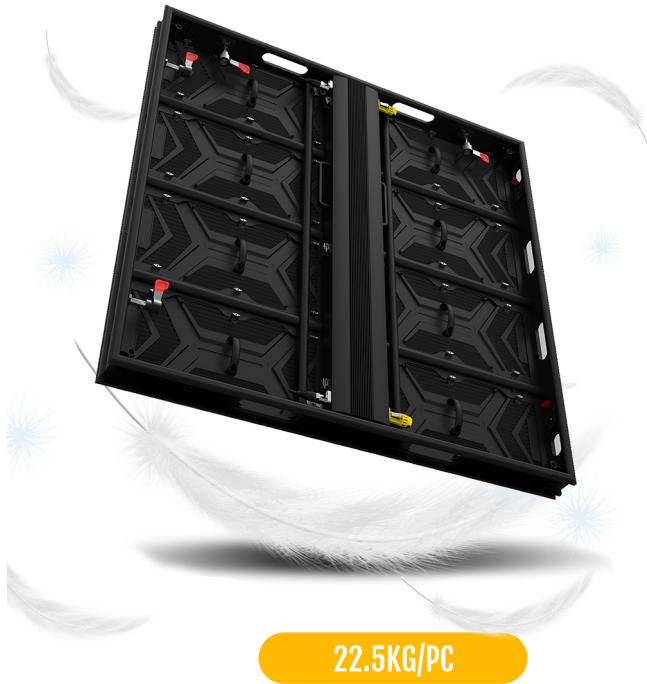
# LOW POWER AND ENERGY-SAVING

30% energy saving than conventional LED screens, greatly reducing costs



## DIE-CAST ALUMINUM ULTRA-LIGHT DESIGN

The FC series is 35% lighter than the standard iron cabinet and weighs only 22.5kg/pc



## SEAMLESS SPLICING

High-precision cabinet installation effect can achieve seamless splicing



# IP65 DUSTPROOF, WATERPROOF

It's for outdoor application with high waterproof level and dust proof level. It can resist some bad weather during outdoor events.

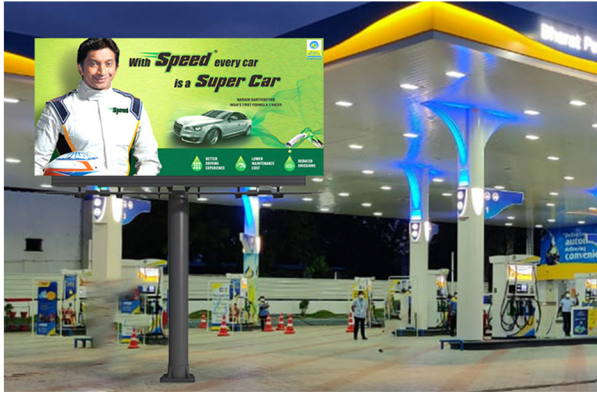


# SUPER WIDE VIEWING ANGLE

Viewing angle is up to 140°/160(H/V) vertical and horizontal, providing a wide viewing angle. Ultra-wide viewing angle give you the largest screen viewing area.



# POPULAR APPLICATIONS



# PACKAGING & TRANSPORTATION



Address: 2F Building 8, Yilisheng Industry Park  
Fuyong, Baoan District, Shenzhen, 518103  
Homepage: [www.ddw.net](http://www.ddw.net)

Business contact: [info@ddw.net](mailto:info@ddw.net)  
Mobile/WeChat/WhatsApp/ICQ: +00 8613417558100  
Skype: brightstevе Tel/Fax: +86-755-23229716

