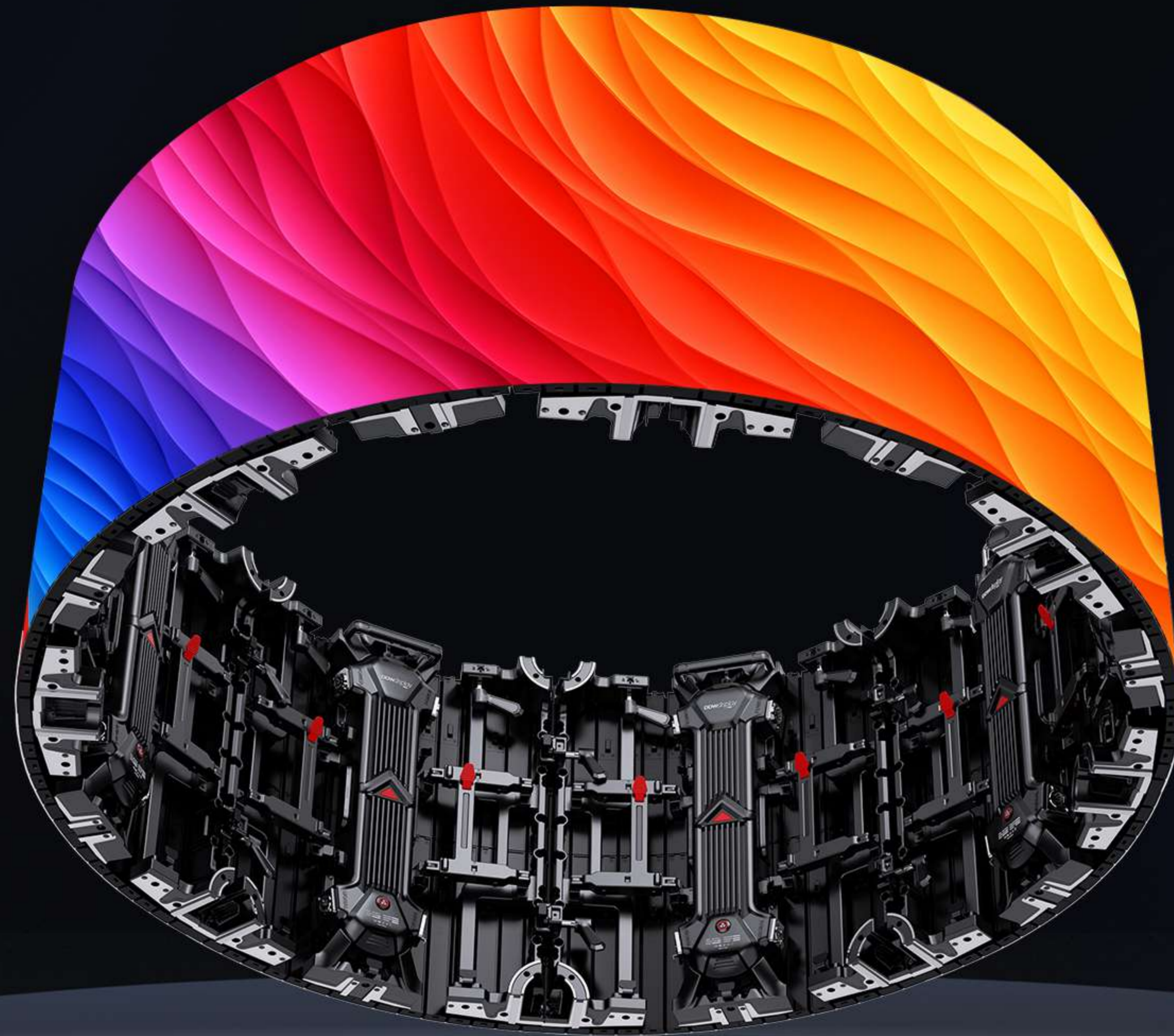


# ULTRA CURVE RENTAL

A FLEX SERIES





# A FLEXSERIES

Pixel Pitch: P2.604 P2.976 P3.91(indoor) P2.976 P3.91(outdoor)

Cabinet size:500\*500mm

Module size:250\*250mm

Cabinet Weight:7.5kg

Brightness:600-800cd/m<sup>2</sup>(indoor) 4500-5000cd/m<sup>2</sup>(outdoor)

Refresh rate:≥3840Hz



IP65 Waterproof



Curved & Right Angle Available



Ultra-Flexible Cabinet



Rear Maintenance

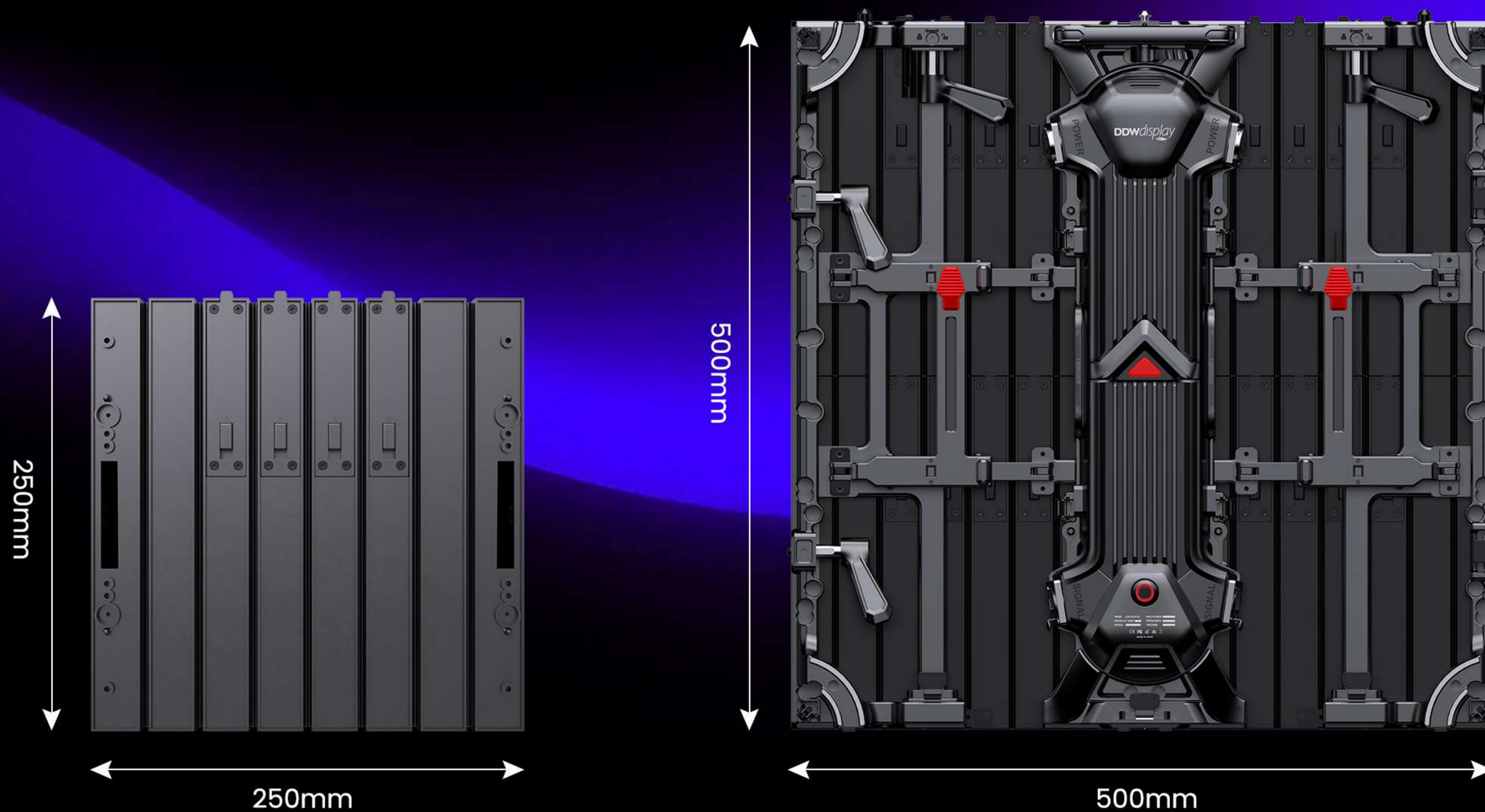


Strong Compatibility



Easy and Fast Installation

# CABINET DIAGRAM



**250x250mm**  
Module size

**500x500mm**  
Cabinet size

# SPECIFICATIONS

<b>Pixel pitch (mm)</b>	P2.604(indoor)	P2.976(indoor)	P3.91(indoor)	P2.976(outdoor)	P3.91(outdoor)
<b>Lamp model</b>	SMD1515	SMD2020	SMD2020	SMD1415	SMD2020
<b>Module pixel resolution(dots)</b>	192*192	168*168	128*128	192*192	128*128
<b>Module size(mm)</b>	250*250	250*250	250*250	250*250	250*250
<b>Pixel density (dots/m<sup>2</sup>)</b>	147474	112896	65410	147474	65410
<b>Brightness(nits)</b>	≥700	≥700	≥700	≥4500	≥4500
<b>white color temperature(°)</b>	6000~10000	6000~10000	6000~10000	6000~10000	6000~10000
<b>Viewing angle(°)</b>	H:160V:140	H:160V:140	H:160V:140	H:160V:140	H:160V:140
<b>Panel dimention</b>	500*500	500*500	500*500	500*500	500*500
<b>Cabinet material</b>	Die-casing aluminum	Die-casing aluminum	Die-casing aluminum	Die-casing aluminum	Die-casing aluminum
<b>Panel weight</b>	7.5KG	7.5KG	7.5KG	7.5KG	7.5KG
<b>Grey scale</b>	14Bit	14Bit	14Bit	14Bit	14Bit
<b>Frame frequency</b>	60Hz/50Hz	60Hz/50Hz	60Hz/50Hz	60Hz/50Hz	60Hz/50Hz
<b>Refresh rate(Hz)</b>	3840	3840	3840	3840	3840
<b>Driving method</b>	1/32s	1/28s	1/16s	1/21s	1/16s
<b>Working Voldtage(V)</b>	AC100-240V	AC100-240V	AC100-240V	AC100-240V	AC100-240V
<b>Input Power(Hz)</b>	50/60	50/60	50/60	50/60	50/60
<b>Max Power consumption/panel(w)</b>	480	480	480	480	480
<b>Power consumption/panek(w)</b>	160	160	160	160	160
<b>Lifespan(H)</b>	100000	100000	100000	100000	100000
<b>IP Level</b>	IP31	IP31	IP31	IP65	IP65

# HD DISPLAY

The picture is clear, the colors are bright, there is no ghosting or flickering, and it is suitable for stage performances and live broadcast applications.

 **3840HZ**  
High refresh rate

 **5000:1**  
High contrast

 **14bit**  
High grayscale

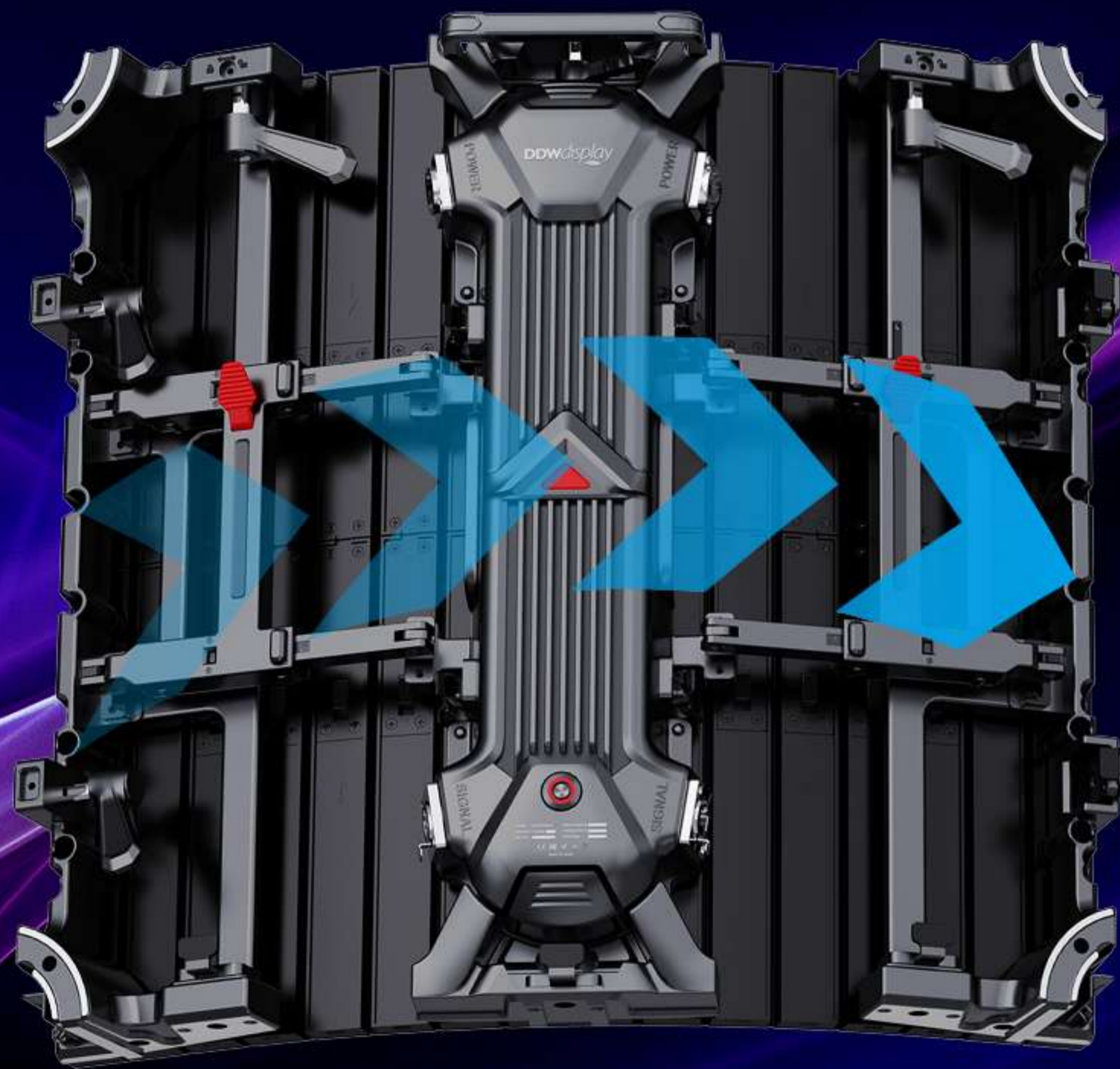
 **1/16s**  
Scan method



**3840HZ**

# ULTRA-FLEXIBLE CABINET

The single-sided arc-shaped lock of a single cabinet can be adjusted to  $\pm 22.5^\circ$ , and the cabinet can be adjusted to an inner and outer S-shaped arc



Inner arc  $45^\circ$



$0^\circ$



outer arc  $45^\circ$

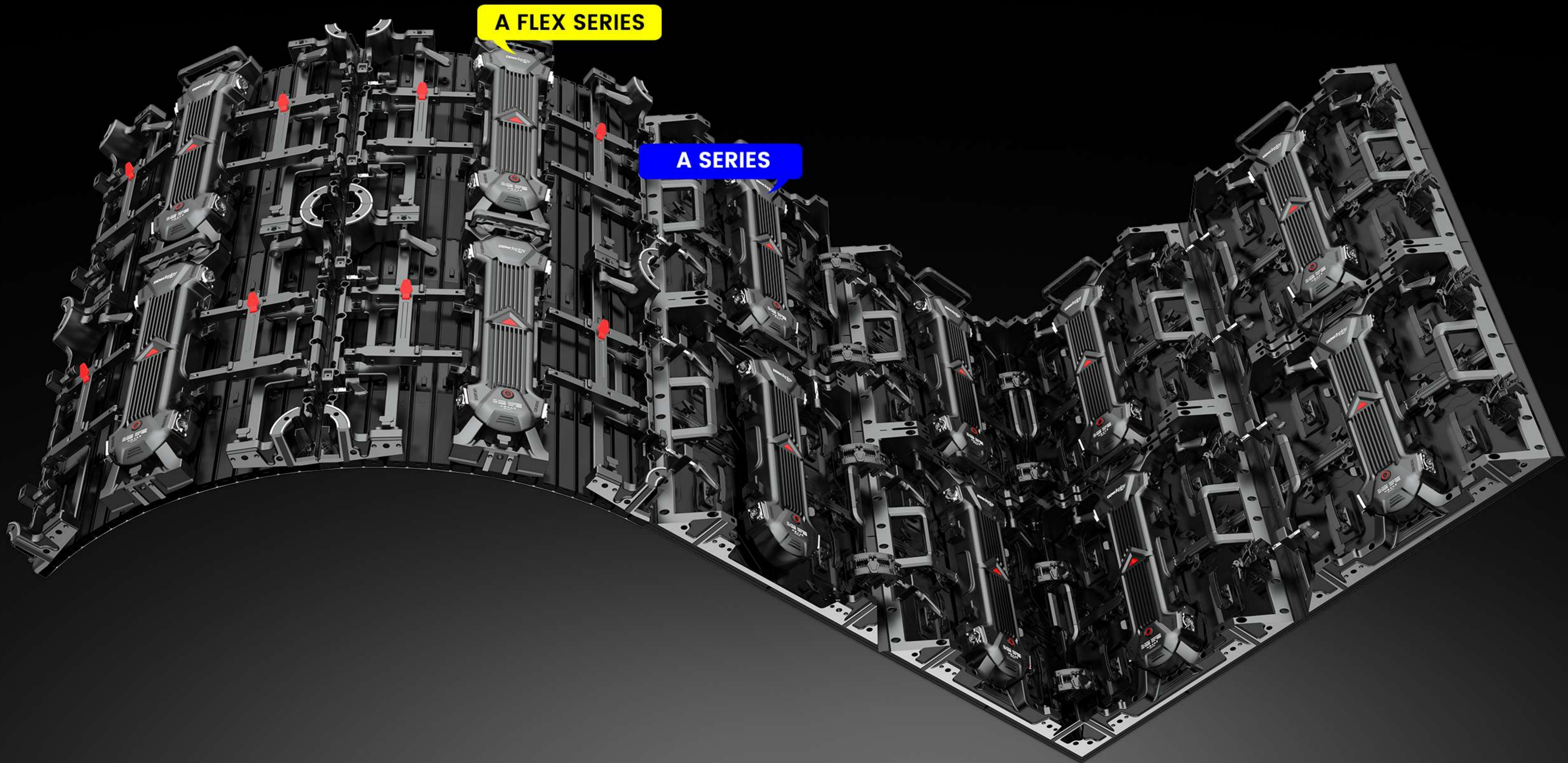
# ULTRA CURVE RENTAL

8 cabinets can be spliced into a complete ring structure



# STRONG COMPATIBILITY

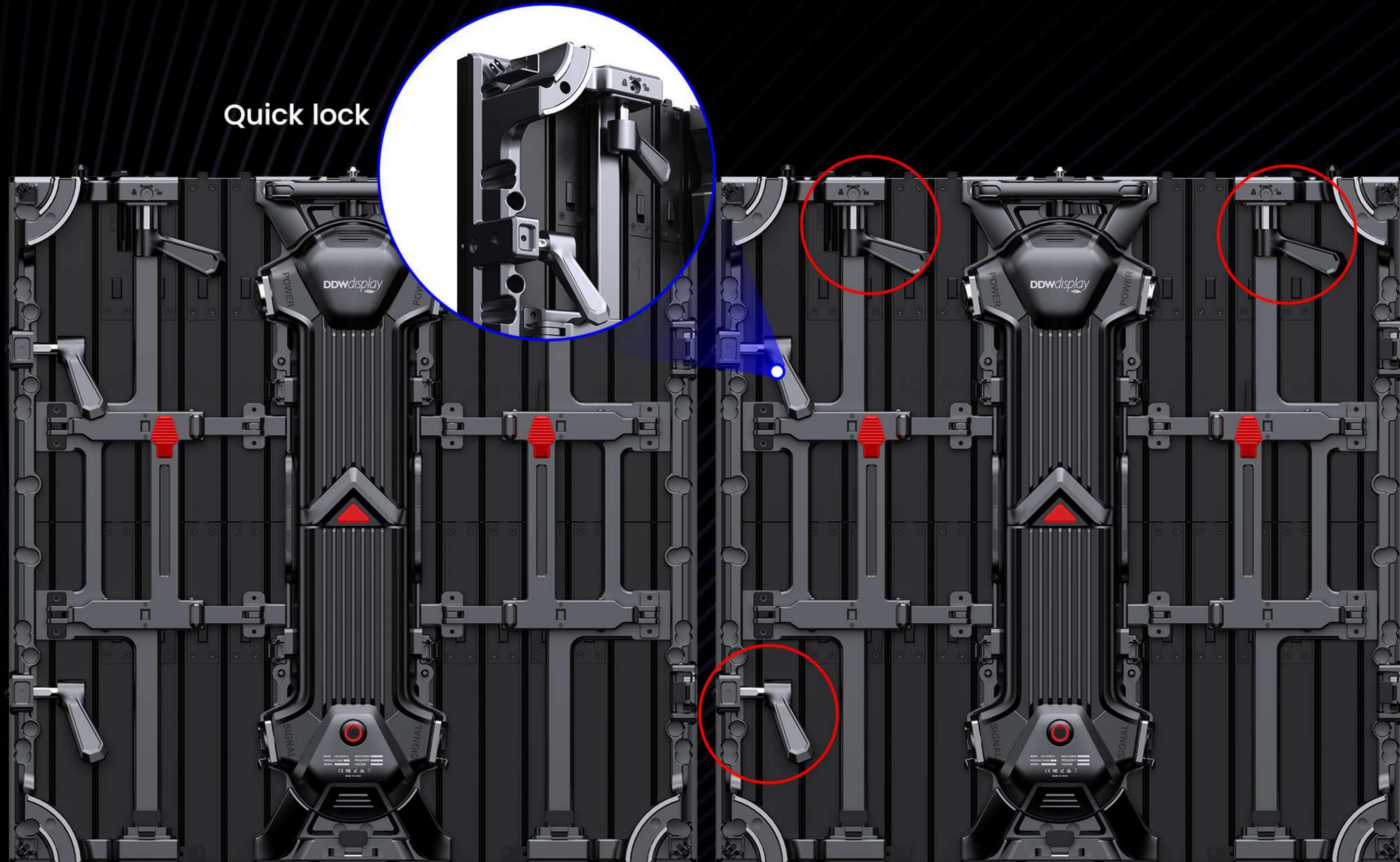
Support A FLEX-series cabinet type splicing to achieve seamless integration





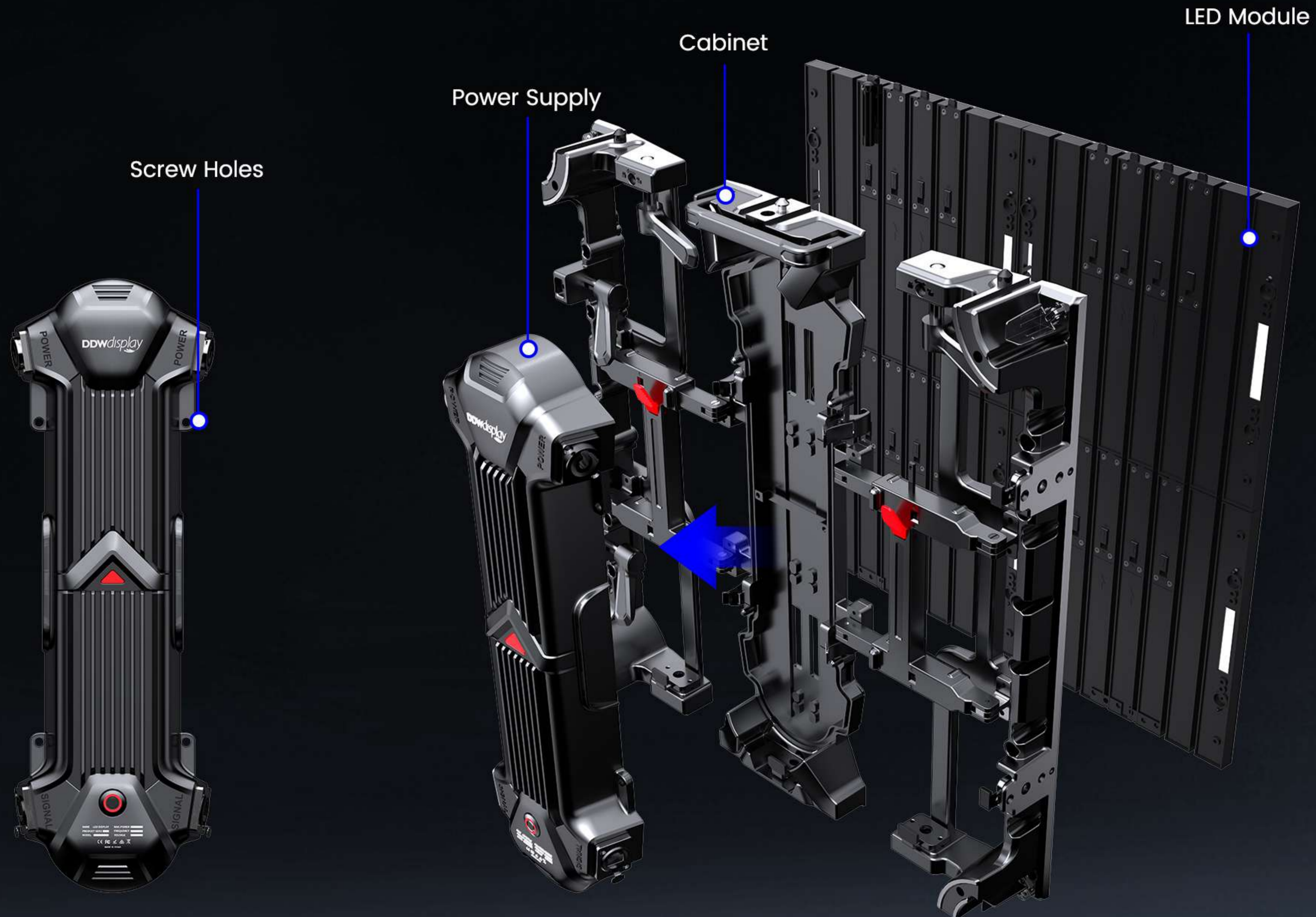
# QUICK INSTALL

The cabinet is equipped with four quick locks to support single-person simple and fast installation



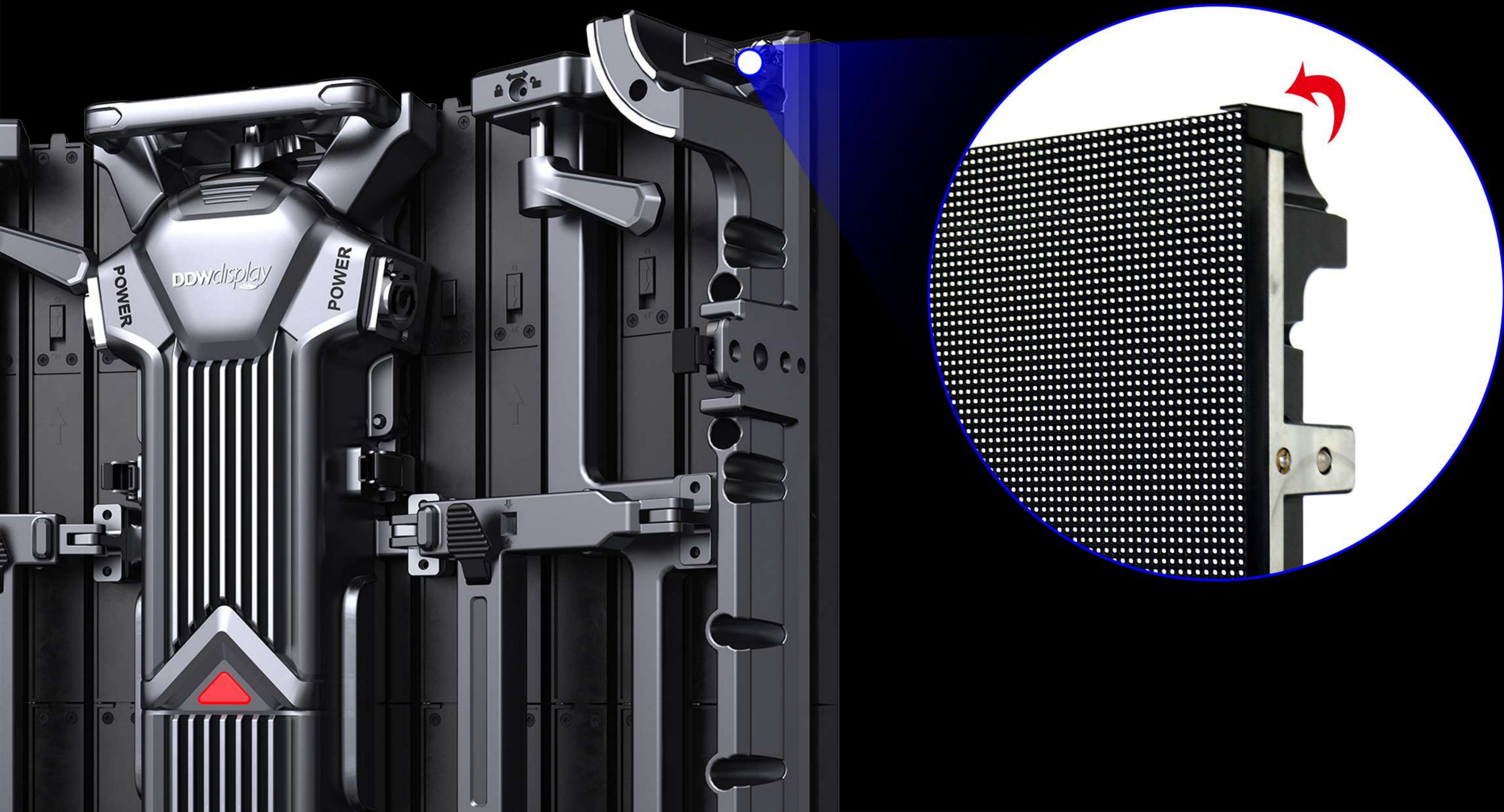
# REAR MAINTENANCE DESIGN

The power box adopts HUB connection design, and maintenance requires removing the screws first.



# CORNER PROTECTION DESIGN

Rental LED display is designed with four corner guards to effectively prevent damage to the LED during transportation, installation, operation and disassembly.



# IP65 WATERPROOF

IP65 waterproof, corrosion-resistant, dust-proof, high temperature resistant.

IP65



WATERPROOF

# APPLICATIONS

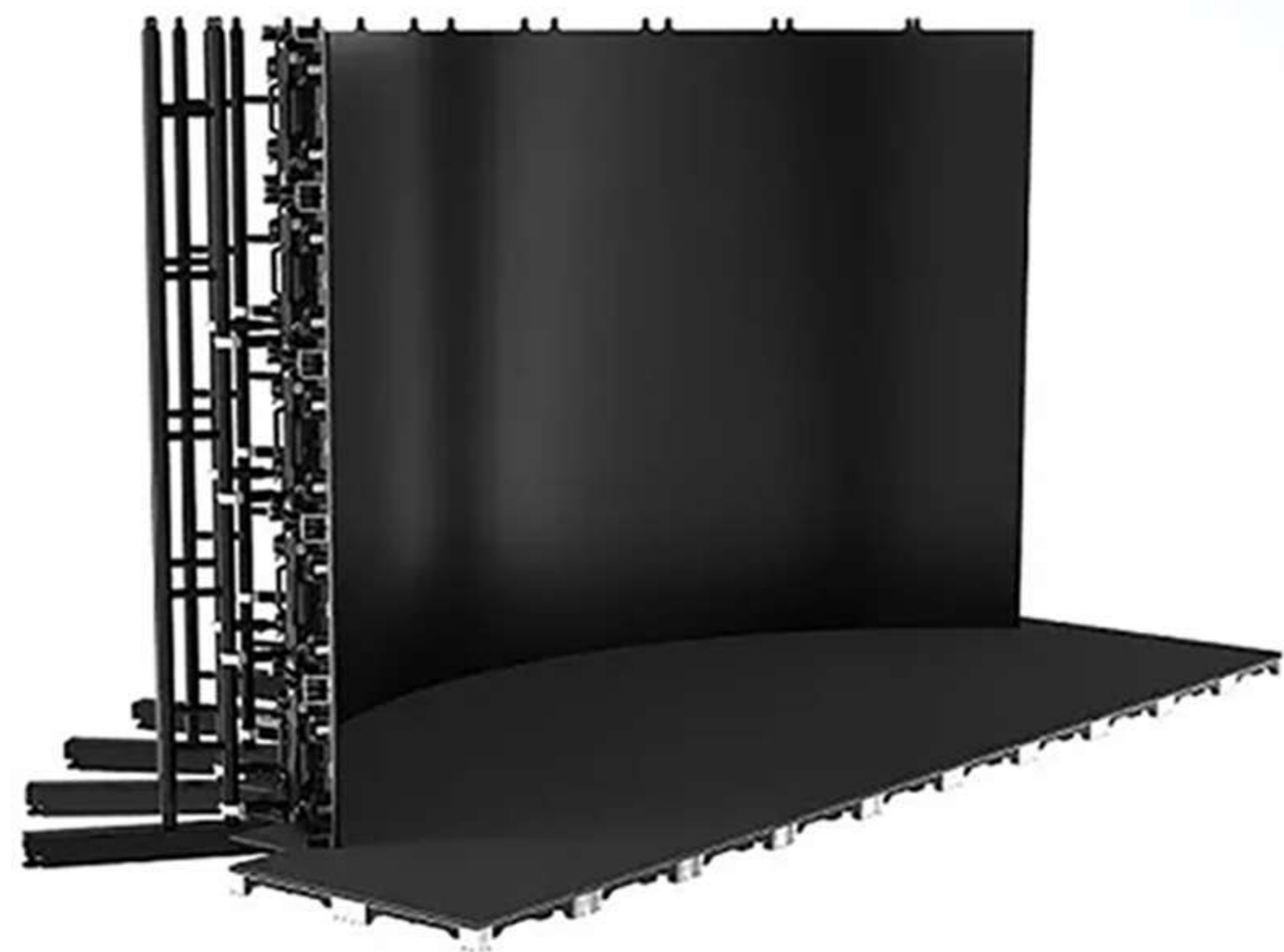
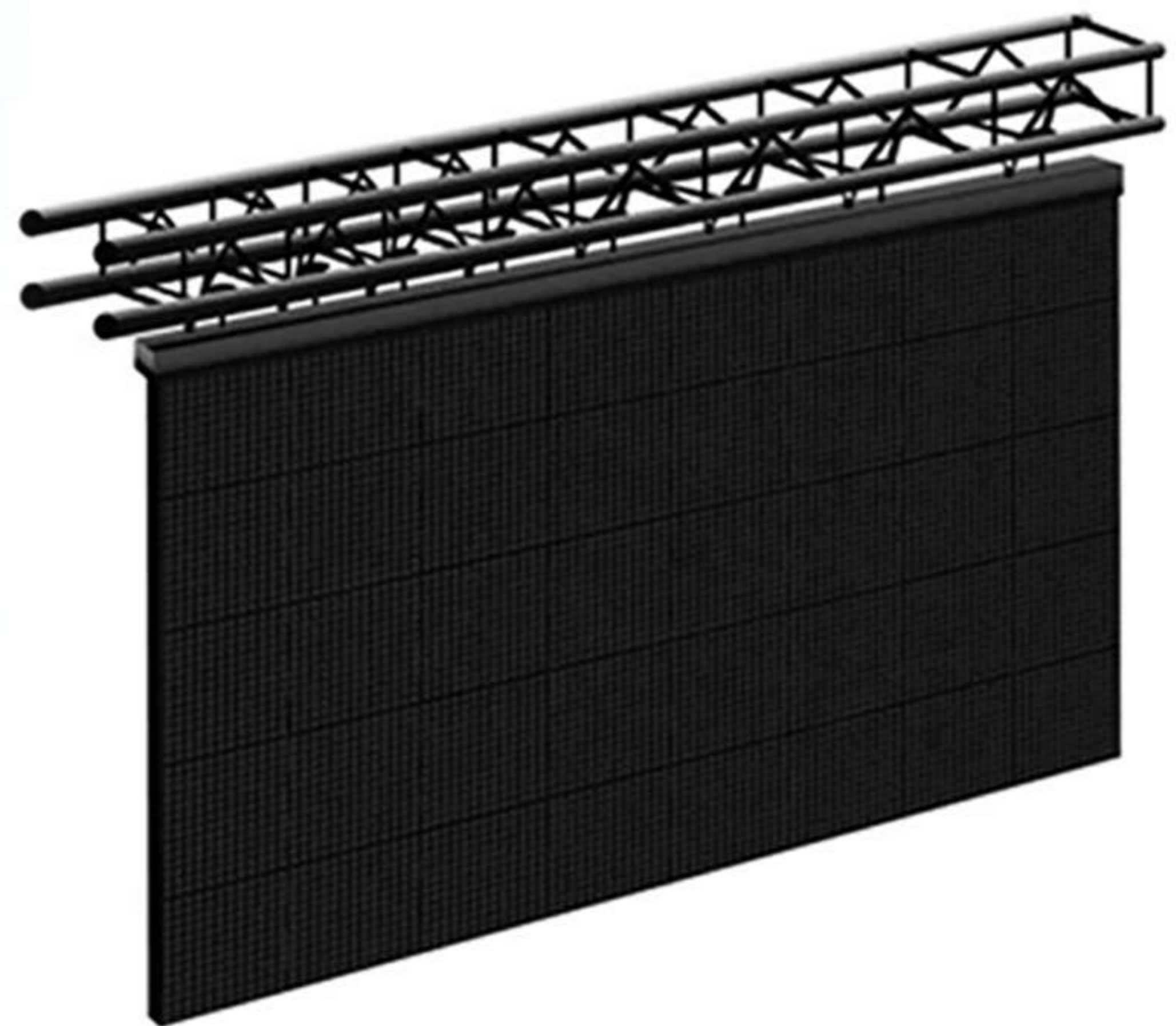




## FLIGHT CASE

Cabinet size	<b>500x500mm</b>
Flight case size	<b>879x714x510mm</b>
Package	<b>8in1</b>
Gross weigh	<b>85kg</b>

# VARIOUS INSTALLATION MODE



# CERTIFICATE

The image displays a collection of certification documents for Shenzhen DDW Technology Co., Ltd. The central document is a QMS Certificate of Registration issued by the China General Beijing Certification Center, certifying the company's Quality Management System (GB/T19001-2016/ISO9001:2015) for the production of LED displays and digital signage. Surrounding this are other certificates: a BCTC Test Report for LED video walls, an IEC CB Test Certificate, a Verification of Conformity (PSE) for video walls, a Certificate of Compliance (RoHS) for LED displays, and a Certificate of Conformity (TUV) for LED displays. The documents are set against a background of a starry night sky.



Certificate status query  
by scan QR code



## QMS CERTIFICATE OF REGISTRATION

Registration No.: 12824Q21369R0S

This is to certify that the Quality Management System of  
**SHENZHEN DDW TECHNOLOGY CO.,LTD**  
Unified social credit code:91440300055133476P  
201, Building 8, Yilisheng Industrial Park, No. 602 Fengtang Avenue, Tangwei Community,  
Fuhai Street, Bao'an District, Shenzhen City, Guangdong Province

Has been audited to conform to the following Quality Management  
System Standard:  
**GB/T19001-2016/ISO9001:2015**  
For the whole process of  
**Production of electronic products (LED DISPLAY, LCD VIDEO WALL,  
DIGITAL SIGNAGE) (export only)**

DATE OF ISSUE: 10-10-2024 DATE OF SUPERVISION : 10-10-2024 VALID UNTIL: 10-09-2027

Certified organizations within the validity period of the certificate surveillance audit at least once a year

This certificate is valid until 09-27-2025  
The certificate information is available in the certification and accreditation administration of  
the P.R.C.'s official website: [www.cncac.gov.cn](http://www.cncac.gov.cn)



No.21, No.4 Yard, Yuatambolajie Street,  
Xicheng District, Beijing  
010-68017408



## TEST REPORT

Report No.: BCTC2207738761SN1  
Applicant: SHENZHEN DDW TECHNOLOGY CO., LTD  
Product Name: LED VIDEO WALL  
Product Type: DDW-LW550DUNTMA4  
Tested Date: 2024-01-22 to 2025-02-24  
Issued Date: 2025-02-24



No.: BCTCRF-5A-012

Page 1 of 63



## Certificate of Compliance

Certificate No.: BKC-160001297

Applicant: **Shenzhen DDW Technology Co., Ltd**  
3/F, No.5, Intelligent Creation Park, Yabao, Shaqng Street,  
Baoan District, Shenzhen, China 518104  
Manufacturer: **Shenzhen DDW Technology Co., Ltd**  
3/F, No.5, Intelligent Creation Park, Yabao, Shaqng Street,  
Baoan District, Shenzhen, China 518104  
Product: **LED full color display**  
Model: **P4, P4.8, P5, P5.2, P5.5625, P5.58, P5.567, P5.857, P5.823,  
P2, P2.8, P3, P3.91, P4, P4.8, P4.7, P4.84, P4.8, P4.3, P10,  
P10.4, P10.416, P13.33, P15.625, P16, P16.64, P20, P24,  
P31.25, P33.33.**  
Test Standard: **IEC62321-1:2013**

The EUT described above has been consolidated by us and found in Compliance  
with the council RoHS Directive 2011/65/EU. It is possible to use CE marking to  
demonstrate the compliance with this RoHS Directive. It is only valid in connection  
with the test report number: BKC-160001297.

RoHS



Shenzhen BKC Testing Co., Ltd.  
6/F, Building 3, Zhongsheng Industrial Park, Nanwan Street, Longgang District,  
Shenzhen, Guangdong, China. Tel:400-059-0700 0755-33170405  
Email:bkc1@bkc-lab.com. Certificate Search: <http://www.bkc-lab.com>



## Certificate of Conformity

Test Report No.: BCTC 160001297  
Product Name: LED full color display  
Model: P4, P4.8, P5, P5.2, P5.5625, P5.58, P5.567, P5.857, P5.823, P2, P2.8, P3, P3.91, P4, P4.8, P4.7, P4.84, P4.8, P4.3, P10, P10.4, P10.416, P13.33, P15.625, P16, P16.64, P20, P24, P31.25, P33.33.  
Test Standard: IEC62321-1:2013  
The EUT described above has been consolidated by us and found in Compliance with the council RoHS Directive 2011/65/EU. It is possible to use CE marking to demonstrate the compliance with this RoHS Directive. It is only valid in connection with the test report number: BKC-160001297.



# 5 YEARS WARRANTY

Common warranty in LED field is 2 years, ours is 5  
Longer warranty periods, better after-sale services  
worry-free user experience



OEM&ODM

**1000+**  
Projects

**5** days  
Fast delivery



Door to door

**3D**

Installation video



Sample support



# CONTACT US

## SHENZHEN DDW TECHNOLOGY CO.,LTD



86 755 23229716



86 134 17558100



[www.ddw.net](http://www.ddw.net)



[info@ddw.net](mailto:info@ddw.net)



2F Building 8, YiLisheng Industry Park, Fuyong  
Baoan District, Shenzhen,518103